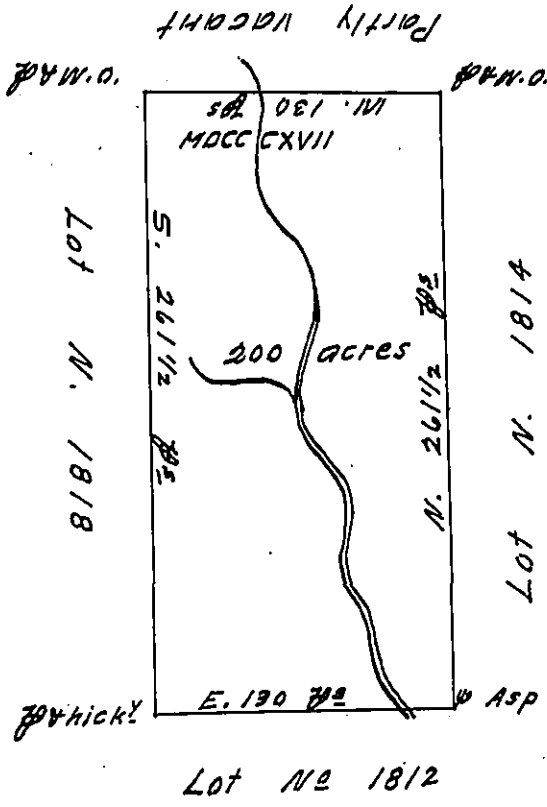


FORM NO 1.

Drawn of  
Juliana  
Thackery Wid-  
ow in trust for  
herself & the heirs  
of Thomas Thackery

No 1817  
Dist 9



In pursuance of an Act of the General Assembly of the state of Pennsylvania, passed the 24th day of February, 1785, entitled, "An Act for directing the mode of directing the mode of distributing the donation lands," promised the tracts by this Commonwealth; and by order of the Surveyor General, with the approbation of the honorable the Executive Council, I have surveyed, on the 12 day of June, 1786, the above described tract of two hundred acres of land, and allowance for roads, No 1817, situate in district No 2, on the west side of the Allegheny river, in the county of Westmoreland.

To John Lukens, Esquire,  
Surveyor General.

E. Evans  
D. Surin

IN TESTIMONY that the above is a copy of the original remaining on file in the Department of Internal Affairs of Pennsylvania, made conformably to an Act of Assembly approved the 16th day of February, 1833, I have hereunto set my Hand and caused the Seal of said Department to be affixed at Harrisburg, this Eighth day of July 1908

Henry Howard  
Secretary of Internal Affairs.